

STAGING AREAS FOR CHRISTMAS PARADE
Asker Howard Turn

Large Floats – Turn down Old Highway 73 and down Town Square Drive.
Cars – Turn down Old Bridge Road, Turn left. Cars will be lined up on Old Highway 73 up to the corner of Town Square Drive.
Tractors – Line up on the gravel drive in front of the Sevier County Electric Substation.

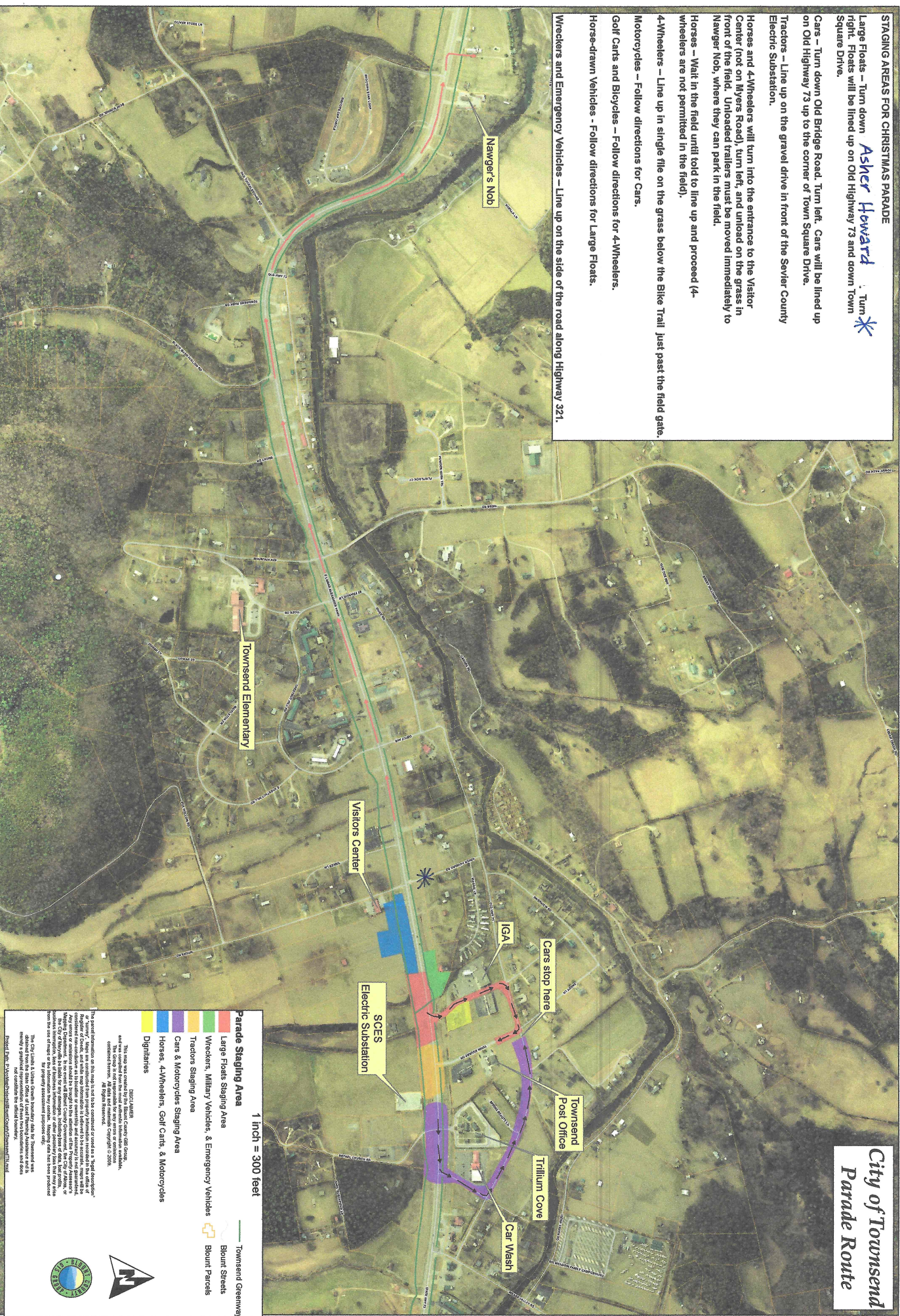
Horses and 4-Wheelers will turn into the entrance to the Visitor Center (not on Myers Road), turn left, and unload on the grass in front of the field. Unloaded trailers must be moved immediately to Nawger Nob, where they can park in the field.

Horses – Wait in the field until told to line up and proceed (4-wheelers are not permitted in the field).
4-Wheelers – Line up in single file on the grass below the Bike Trail just past the field gate.
Motorcycles – Follow directions for Cars.

Golf Carts and Bicycles – Follow directions for Cars.
Horse-drawn Vehicles - Follow directions for Large Floats.

Wreckers and Emergency Vehicles – Line up on the side of the road along Highway 321.

City of Townsend
Parade Route



1 inch = 300 feet

- █ Large Floats Staging Area
- █ Tractors Staging Area
- █ Cars & Motorcycles Staging Area
- █ Horses, 4-Wheelers, Golf Carts, & Motorcycles
- █ Dignitaries
- █ Townsend Greenway
- █ Blount Streets
- █ Blount Parcels

SCES Electric Substation

IGA

Car Wash

Trillum Cove

Townsend Post Office

Cars stop here

Visitors Center

Townsend Elementary

Nawger's Nob

Blount Parcels

Townsend Greenway

Blount Streets

Blount Parcels

SCES Electric Substation

IGA

Car Wash

Trillum Cove

Townsend Post Office

Cars stop here

Visitors Center

Townsend Elementary

Nawger's Nob

DISCLAIMER:
 This map was created by the Sevier County GIS Group. The City is not responsible for any errors or omissions. The City is not liable for any damages, including consequential damages. All rights reserved.

THESE AREAS:
 This map was created by the Sevier County GIS Group. The City is not responsible for any errors or omissions. The City is not liable for any damages, including consequential damages. All rights reserved.

THESE AREAS:
 This map was created by the Sevier County GIS Group. The City is not responsible for any errors or omissions. The City is not liable for any damages, including consequential damages. All rights reserved.

THESE AREAS:
 This map was created by the Sevier County GIS Group. The City is not responsible for any errors or omissions. The City is not liable for any damages, including consequential damages. All rights reserved.

